

Friends of Chandor Gardens  
presents



**Saturday, June 1, 2024 | 10 am - 4 pm**

Enjoy a self-guided journey through seven unique gardens  
in Parker County.

Discover what lies behind the hedges, fences, and gates!



*Chandor Gardens  
Foundation, Inc.*

Tickets: \$12 online (in advance) at [www.chandorgardensfoundation.org](http://www.chandorgardensfoundation.org)  
or \$15 at garden gates the day of the event

---

## Welcome

---

Dear Guest,

Welcome to the 3rd Annual Secret Gardens of Parker County Tour.

The Friends of Chandor Gardens, part of Chandor Gardens Foundation Inc.\*, are thrilled to present this year's tour of seven unique gardens in Parker County, Texas. The gardens showcase stunning views, garden art, broad range of plants for Texas gardens, and creative landscaping ideas. Have fun discovering what lies behind the hedges, fences, and gates!

The gardens can be visited in any order between the times of 10:00 am and 4:00 pm. Make your own itinerary, go at your own pace, and enjoy your time in these beautiful gardens.

We wish to extend a huge thank you to the gracious garden owners who have opened their gardens to us.

We wish to thank our volunteers and sponsors, without whose support we would not be able to have this wonderful event.

Lastly, thank you, valued guest, for your support of this event. Proceeds benefit the enhancement of Chandor Gardens reflecting the artistic vision of Douglas Chandor.

Sincerely,

Committee Members, 3rd Annual Secret Gardens of Parker County Tour

Karen Kennedy - Chairperson

Darlene Chapman

Ann Geer

Beth Batista

Eileen Leslie

Nancy Wester



\* Chandor Gardens Foundation Inc. is a 501 (c)(3) organization.

# Thank You to Our Tour Sponsors



**Magnolia Level  
Sponsor**



**CACTUS JACK RANCH**  
- EST. 1970 -



**Rose Level Sponsors**

**KAREN KENNEDY**  
LICENSED TX INSURANCE AGENT

**MEDICARE**  
INSURANCE ★ SOLUTIONS

**weatherford  
GARDENS**

**CROSS  
TIMBERS**



CENTURY 21 Judge Fite Company    JAMIE BODIFORD

**LADAR  
FARM & RANCH**

**WEST FORK  
GARDEN MARKET**

**Lily Level Sponsors**



**Daisy Level Sponsors**

**EST. 2006  
PEACOCK'S FEED**  
PROpane REFILL STATION  
*Boutique & Gifts*  
WEATHERFORD, TX

**DAVIS FORCH & PATIS**

**David's**  
stove shop inc.  
Weatherford, Texas

Robert and Theresa Anderson

Larry and Carlene Eubank

**In-Kind Sponsor**



---

## 126 Cahill Court, Weatherford

---



When we first pulled up to the house with our realtor, kids and grandchildren March 1st, 2020, we quickly realized this would be our new home.

The two earlier homeowners made an amazing effort around the home. Entering the driveway, there were multiple plant bays, mature trees and the house surrounded in elephant ears, Vitex, rose bushes, and many other perennials. As we walked toward the backyard we saw the large waterfall, flower beds covered in Lenten Roses (Hellebores), Black-Eyed Susans, ferns, elephant ears and a Japanese maple. Beyond the house, it looked like a state park that we were excited to explore! After living in Lubbock for over thirty years, gardening there had its own challenges, but we were ready to learn more; and have we ever!

While the house and yard were in good shape, some things required repair. The first thing we tackled was getting the waterfall going again. We've enjoyed the sound of the water during the day and especially during the summer nights as we sat on the back porch.

The start of our new journey was difficult to learn local plant issues due to the pandemic. We learned harshly about oak wilt killing a 50-foot tree during our first year. Flower beds required new mulch and cleaning. Our first effort to fill in blank areas involved hostas and purple hearts. Day 1: “Oh, look at the deer! How beautiful they are”. Day 2: Everything mowed to the ground...lesson learned. (Almost – we are stubborn people).

While we researched information about plants, we spoke to any neighbor we could as well as our great friends from Lubbock: Dr. and Mrs. John Zak. As a Texas Tech professor in microbiology and soil ecology, both are long term gardeners and were invaluable in our efforts.

After our first year, we installed a pool. The wood-chipped pathway from the driveway to the backyard was originally done based on arborists’ recommendations to protect tree roots from the equipment needed to install the pool. With all of the critters (both good and bad) and a need to protect the kids, pathways were covered with wood chips through the back area, around the tree fort and where the zip line goes. It’s helped with the State Park appearance.

Around the pool, you’ll find color guard - red and yellow yuccas, along with some cat mint. By the waterfall, there is nandina, salvia, Texas sage, potato vines, angel wing begonias. The rose of Sharon you see in the back were planted by nature, and they did well! Turk’s caps really flourish quickly. Flower beds may also contain cannas, oxalis, coleus, sansevierias, and many other plants. Around the house, trees have been placed for each grandchild (burr oaks, red flame maple, various oaks). Our effort was to enjoy a landscaped area that gradually flows into native vegetation with walking paths and the pool.

We hope you enjoy your time in our garden!

*Scott and Kris Farmer*



---

## 211 Davis Street, Weatherford

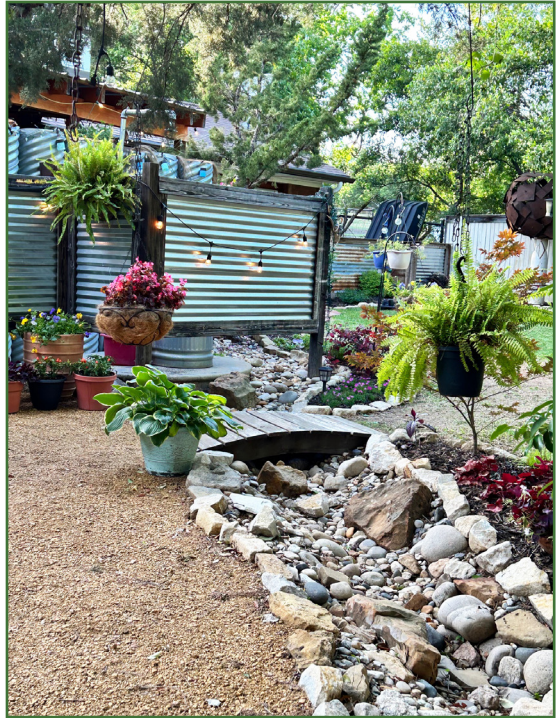
---



Welcome to our home and garden! We are excited and honored to be a part of the 3rd Annual Secret Gardens of Parker County Tour presented by the Friends of Chandor Gardens. We moved into our home in February of 2018. Several appealing aspects of the house included the location across from the historic Cherry Park and in the historic neighborhood district of Weatherford and the landscape potential, including three covered porches in the backyard (the “back” porch off the dog run, the “sitting” porch, and the “long” porch). The yard and landscaping had a lot of potential to be a beautiful and peaceful space.

After purchasing the home, we learned that the landscape was completely xeriscaped around 2013 by previous owners. There was an attempt by the next set of owners to transition the xeriscaped landscape into a more traditional landscape anchored by large areas of St. Augustine grass. The grass was placed on top of the xeriscaped crushed granite with an existing weed barrier underneath and was not able to survive the poor soil and hot Texas summers. The existing flower beds had become overgrown with weeds. Therefore, our first major project was to weed, restore, and reshape some of the existing flower beds and to add some new flower beds to the front, side, and back yards.

Our next project was to build a walkway from the front door to the driveway using crushed granite and repurposed railroad ties that were being used as edging for some of the backyard beds. We also restored some of the xeriscaping in the front and back yards in areas that had a lot of shade. The dry creek bed in the backyard was filled with sediment and debris from storms over the years. We removed all of the existing river rock and gravel and reformed and restructured the dry creek bed to incorporate water runoff from the outdoor shower.



The outdoor shower redesign and the brick patio that connects the back porch to the French doors off the back room were COVID projects in the spring of 2020. The outdoor shower is one of our favorite parts of the backyard. Since the shower has both hot and cold water access, the shower is used throughout all four seasons of the year. A large water trough is used to capture water from the shower. This “reclaimed” water is then used to water many of the plants and grass in the backyard.

The landscape design is a constant “work in progress”. A majority of the flowers and plants in the backyard are “rescue” plants from the clearance racks of local nurseries that have been nurtured back with loving care and attention. Along with “rescued” plants, we have two rescued dogs (Winnie and Betty White) and three rescued kitties (Taco, Helen, and Liz Lemon) that are regulars in the garden as well!

Most if not all of the flowers and plants have placards identifying the common names of the plants and flowers. We love spending time in our yard with family and friends and we hope you enjoy spending a little time in our garden and get to experience some peace and tranquility as you stroll through our “happy” space!

*Keith and Kelly Guyon*

## 416 W. Josephine Street, Weatherford



Miss. Josephine is a small cottage-style Victorian Farmhouse built in 1896. The home was featured in the 39<sup>th</sup> Annual Candlelight Tour of Homes in December of 2022.

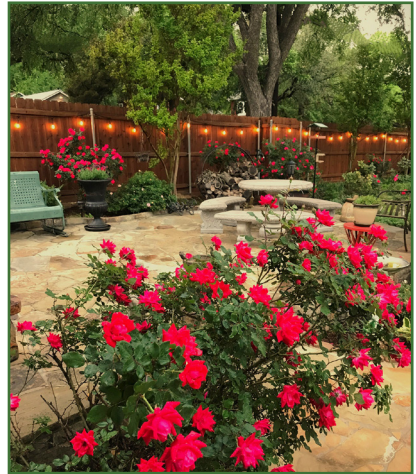
I purchased Miss. Josephine in 2018 and have been blessed by the previous owners who worked diligently to maintain her grounds by planting a variety of bulbs, trees, shrubs, and other plants that have inspired me to continue.

One of the first things you will notice as you approach the front of the house are the two beautiful Catalpa trees growing on each side of the walkway. They start blooming in the spring (usually early April) and produce fragrant white blossoms that attract and provide food/pollination for bees, butterflies, and hummingbirds. The leaves are heart-shaped and very large (up to 12 inches) and provide a “tropical” feel when enjoying them from the front porch. After the initial flowering and later in the fall, the trees form long seed pods that droop from the branches. This is the reason why some people refer to the Catalpa as “The Cigar Tree”. The Catalpa trees can live 50-150 years and are the sole host to the sphynx moth.

As you continue into the backyard area, you will be welcomed by an assortment of plants that have been chosen to withstand the Texas heat,



provide aesthetic enjoyment and supply food and shelter for the wildlife. You will observe red yucca, roses of all colors, tiger lilies, daffodils, fuchsia, cannas, crepe myrtle, mounding phlox, Turk’s Cap, clematis, morning glories, lantana, salvia, columbine, Hosta’s, Japanese Maple, Texas Sage, lamb’s ear and others. A flagstone walkway will lead you through the grounds.



Behind the main house there is another small home that I use as a home office and as a sitting area in the evening.

The bird baths and feeders attract a variety of birds all year long and I enjoy the company they provide. This serene property provides so much enjoyment and is the perfect place to begin and end each day.



---

## 413 W. Lee Avenue, Weatherford

---



Welcome to “The Blue House”!

The Blue House is a Victorian Queen Anne historical home built in 1892. As you approach the home you will immediately notice the steep roof with intersecting gables and the one-story large wrap-around porch with

*Continued on next page*



columns. The home was featured in the 40<sup>th</sup> Annual Candlelight Tour of Homes in 2023.

I purchased the Blue House in 2022 as an addition to the home directly behind, “Miss. Josephine” - 416 West Josephine. Each of the properties are so special and they each have their own unique characteristics. Combined they are the perfect balance for creating privacy or entertaining friends and family, and just enjoying the beautiful Texas evenings here in town.

The front porch of this beautiful home is amazing! I absolutely love sitting on the porch and enjoying the surrounding historical homes and visiting with the neighbors passing-by on their morning / evening walks.

The front yard of the Blue House has an extremely healthy stand of St. Augustine grass that is beautiful and perfect for walking barefooted to the mailbox in the summertime!

The backyard space includes an amazing pool and outdoor kitchen area that is perfect for entertaining and enjoying all year long. Even on a rainy day you can sit and listen to the sound of rain on the tin-roof, cook a meal and totally enjoy it with friends under the cover.

Since owning the home, I have added flower beds and some boulders for accent. There are some older rose bushes, yaupon shrubs, red yuccas, native oak, and other plantings that you will enjoy as you tour the property. There is a stone walkway to tie the properties and lead you through the grounds.

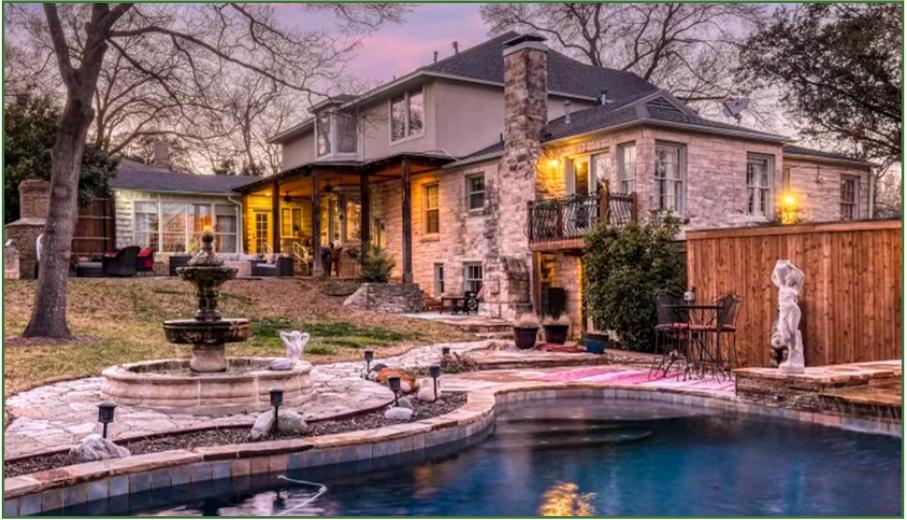
I hope you enjoy your tour of these two beautiful homes, and thank you for your support of the 3<sup>rd</sup> Annual Secret Gardens of Parker County Tour and the Friends of Chandor Gardens.

*Kelley Brooks*

---

**609 W. Lee Avenue, Weatherford**

---



Welcome to our paradise. My husband and I bought our home in 2021. The grounds have become our little piece of paradise. Surrounded by an eight-foot privacy fence, you can access our little piece of heaven through our Spanish-style gates. Once inside it opens up to a comfortable flagstone patio with a standalone outside fireplace for those cozy evenings. There are two Oak trees that provide wonderful shade though out the day. There are several levels of planter beds containing Goldstar Esperanza, Giant Elephant Ears, Red Tip Photinia trees and the occasional New Gold Lantana, welcoming you to our oasis. Pampas Grass, Purple Heart Wandering Jew, Marigold, Banana trees, Gold Star Esperanza and Texas Sage outline the background along a beautiful wooden privacy fence. There are several sitting areas throughout the yard.

An old, beautiful, seven-foot tall sandcrete fountain provides a peaceful sound throughout this paradise. Several statues are placed along the grounds. These beautiful grounds are enhanced by a free-form pool with a shallow water lounging area, an elevated spa with a waterfall into the pool and a shear descent waterfall into the spa. The pool is surrounded on three sides with river rock and one side containing a planter with stones from our parents' travels abroad.

*Robert and Lisa Brown*

711 W. Lee Avenue, Weatherford

## Chandor Gardens



Chandor Gardens, a unique 3.5 acre estate garden in the heart of Weatherford, Texas, is the brilliant vision of famed portrait artist Douglas Chandor (1897-1953). Few gardens in the world capture charm and grace on such a personal level with the ability to stir the spirit and sooth the soul. Fewer still are available for the public to explore.

Beginning in 1936 as an artist's dream, Douglas Chandor built the gardens from a cactus covered caliche hillside. He envisioned individual "garden rooms", connected by paths, with hedges and walls enclosing the gardens, and that's exactly what he created and named White Shadows. When questioned about his passion for gardening, Douglas would reply that he was given the talent to paint portraits in order to make the money needed to build his garden. This turned out to be a 16-year labour of love until his untimely death in 1953.

After Douglas' death, his wife Ina changed the name to Chandor Gardens as a tribute to Douglas, and kept it open to the public until her passing in 1978. For the next 16 years the gardens fell into a state of neglect. In 1994 Melody and Chuck Bradford purchased the property and lovingly restored the home and gardens. The City of Weatherford acquired Chandor Gardens in 2002.

Chandor Gardens captures both the elegance of a formal English garden and the ornate design of ancient Chinese architecture and ornamentation. The Boxwood Garden, the Bowling Green, and the Pixie Pond bring to life English garden features. The Chinese bridge, the Stone of the Immortals, the Chi-Ling Fountain, the Buddha Niche, and the Moon Gate add the Chinese garden flavor.

Today the hardscape of paths, ponds, fountains, waterfalls, and grottoes remains essentially unchanged; the plantings reflect a far more diverse palette of species than was ever utilized by Douglas. This is partially due to a much larger and denser tree canopy than in Douglas' day, which has reduced the amount of sunlight within the garden, and partially due to the necessity to make the garden interesting and colorful year round.



Each season is distinctly different at Chandor Gardens, and each year brings different color schemes, so that garden guests always find something new and different to see. And while the plantings may change often, the spirit remains the same, a reverent testimony to the brilliant Englishman who came to Texas and built a garden.

Chandor Gardens stands today as a world renowned garden listed on the National Register of Historic Places.

---

## 1911 Woodland Hills Lane, Weatherford

---



When approaching our property, the first thing you notice are our beloved trees. They cover about 70% of our acreage and provide privacy, shade, wind and noise blocking, a natural woodland appearance, and a habitat for all wildlife. We have hawks, birds and deer nesting, fox breeding in dens, raccoons, butterflies, humming birds, and a few other creatures, which is probably our fault considering we have three birdbaths and feed all with veggie and produce scraps.

We love flowers and lots of color. Unfortunately, because of the shade and deer, we are limited in what we can have. We moved here in 1995 and our landscape has gone through a few makeovers. We tried taking many precautions with the deer but to no avail. We finally gave in. Due to the intensity of the sun and heat we needed drought-tolerant and deer-resistant

plants. After some research we came up with what we have now.

We went with the basic rule of design: color, texture, and balance. You may see a bed of all green, but it will include many shades of green and varying shapes and textures.



Other things we love are different rocks and stones for edging, creeks, and focal points. You will notice we like continuity throughout the landscape, such as a particular plant carried throughout our yard.

We both like to cook, so there are a wide variety of herbs readily available throughout the beds. Not only are they for food but also serve as insect repellent.

Another area is our Butterfly and Hummingbird Inn. It's one of our favorite beds.

Come and enjoy.

*Paul and Deborah Nortwich*



117 Ranch House Road, Willow Park

## St. Francis of Assisi Anglican Church Community Garden



At the Saint Francis of Assisi Anglican Church Community Garden in Willow Park, volunteers work in conjunction with members of the Gardeners' Club of Parker County to grow food for area residents in need in Parker County. Its main mission is to provide fresh organic vegetables and herbs for the Tarrant Area Food Bank (TAFB) West Community Market.

The Gardeners' Club of Parker County is 50 years old this year and has met at St. Francis for many years. Father Sam Wilgus joined the church and in 2020 his vision to engage and serve the local community came to fruition with the guidance and help of members of the club. The lawn area in front of the church grounds was to be a perfect spot to create this. And so the project began.

A plan was devised, the area prepared. Then with the additional help of volunteers from Boy Scout Troop 2001, their families, a Weatherford High School student saving for college, parishioners, neighbors, and Garden Club members, the lawn area was transformed into a productive asset for the county.



The ground was solarized to kill off the grass, and a technique called Hugelkulture was employed in the raised beds that were built on the rocky native ground. Fences were installed to protect the garden from wildlife, irrigation was dug, and drip was installed on a timer.



Grants were received from Espoma for organic products, tools were received from Ames Tools USA, and Parker County Master Gardeners Association provided additional funds to help our mission for the community.

Seeds were donated by a local feed store and Baker Creek Seeds. Each year, TAFB, in conjunction with Fort Worth Botanic Garden and Botanical Research Institute of Texas, grows vegetable seedlings for many local community gardens, along with many other donated plants and materials from residents. We became quite productive. In 2022, our first growing year, these gardens produced 250 pounds of produce. The second year we harvested 620 pounds of produce, and the third year we harvested over 730 pounds of produce. All of this bounty is delivered by volunteers to the food bank weekly. With these joint efforts we have a year-round productive garden.

*Jacque Brock, Gardeners' Club of Parker County, Volunteer*



## About Chandor Gardens Foundation



Chandor Gardens Foundation, Inc. was formed in 2013 to preserve and protect the historic heritage of Chandor Gardens, and enhancing that heritage, in alliance with the City of Weatherford, through the development of the entire Chandor property in a manner consistent with Douglas Chandor's artistic vision, while making it a center for art, music, horticulture and more.

The Foundation's vision for the future includes developing the adjacent 13.5 acres. The development will comprise of a visitors center with gift shop, expanded parking, an event center for community events, visual and performing arts facilities, nature walking paths, and uniquely designed outdoor spaces. These additions will enhance our rapidly growing community, attract more visitors, capitalize on the history and the beauty Chandor Gardens has to offer, and alleviate the burden that constant use places on the existing historic home and garden.

### Friends of Chandor Gardens

Members of the Friends work to preserve the heritage of Chandor Gardens. They train and provide docents, help with seasonal events at Chandor Gardens, and endeavor to engage the community by promoting events that bring speakers, artists, programs, and classes to Chandor Gardens. The Friends also take day trips to museum exhibitions, notable gardens, and more; bring in speakers, and have yearly social gatherings. It is a great opportunity to connect, make friends, and make a difference.



[www.chandorgardensfoundation.org](http://www.chandorgardensfoundation.org)

Visit us on FACEBOOK @ ChandorGardensFoundation

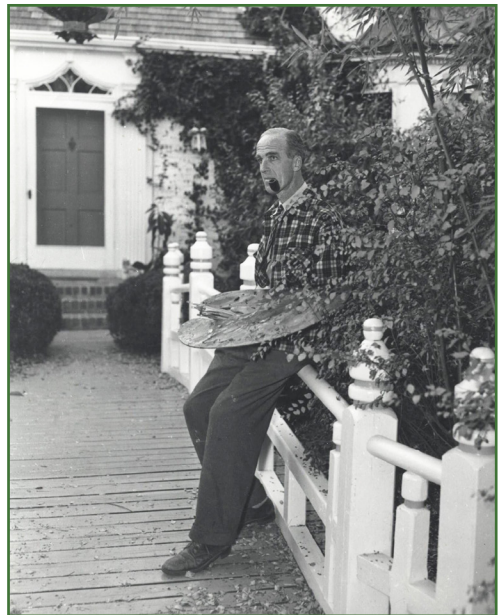
## Current Chandor Gardens Foundation Projects:

Earlier this year the Foundation was able to purchase an exquisite 1979 Steinway & Sons Model M Chippendale-style walnut piano. The piano, while newer, is the same make and model as the piano that Ina Chandor owned and regularly played for guests and those who came to the house to have Douglas Chandor paint their portrait.

The piano arrived at Chandor Gardens on Feb 1, 2024, and now has a permanent home in the Great Room. However, we now have a bank loan to pay off; as such, funds raised from the 3<sup>rd</sup> Annual Secret Gardens of Parker County Tour will be going toward paying off the loan for this beautiful piano.

The other project currently being undertaken is the commission of a life-sized bronze portrait bust of famed portrait artist and gardener Douglas Chandor (1897– 1953) by Fort Worth sculptor Michael Pavlovsky.

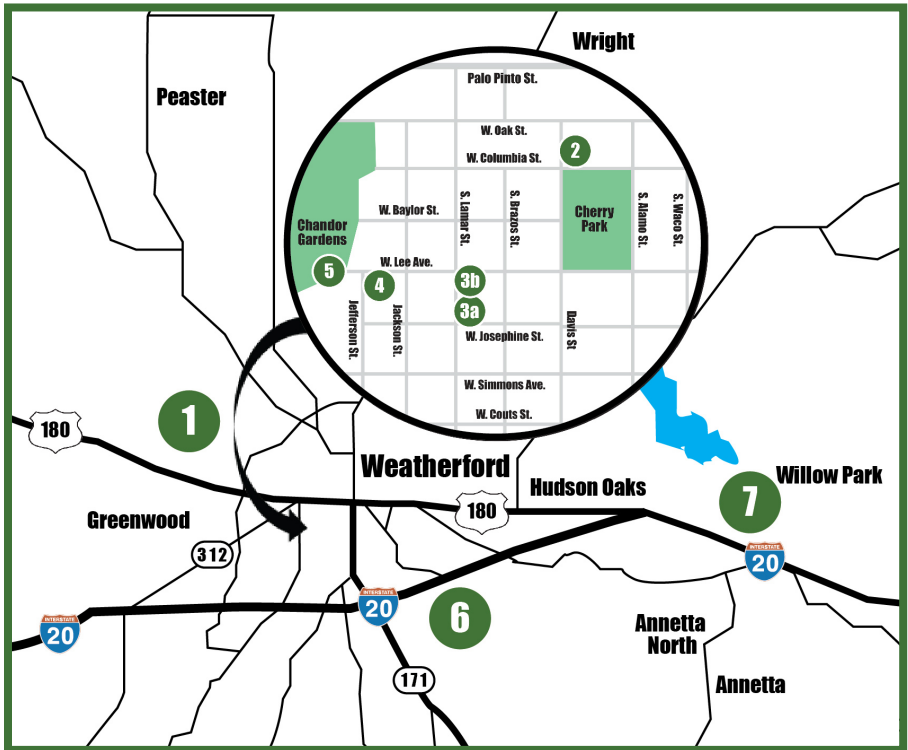
This bronze portrait bust will be completed and installed prominently within the gardens at Chandor Gardens by the Fall of 2024.



Chandor Gardens Foundation Inc. 501 (c)(3)  
A Private Operating Foundation  
P.O. Box 114, Weatherford, Texas 76086

# Secret Gardens of Parker County Tour 2024

## Wayfinding Map



### Gardens

### Description Pages

- |          |                                                               |         |
|----------|---------------------------------------------------------------|---------|
| <b>1</b> | 126 Cahill Court, Weatherford                                 | 4 - 5   |
| <b>2</b> | 211 Davis St., Weatherford                                    | 6 - 7   |
| <b>3</b> | a) 416 W. Josephine St., Weatherford                          | 8 - 9   |
|          | b) 413 W. Lee Ave., Weatherford                               | 9-10    |
| <b>4</b> | 609 W. Lee Ave., Weatherford                                  | 11      |
| <b>5</b> | 711 W. Lee Ave., Weatherford: <i>Chandor Gardens</i>          | 12 - 13 |
| <b>6</b> | 1911 Woodland Hills Lane, Weatherford                         | 14 - 15 |
| <b>7</b> | 117 Ranch House Rd., Willow Park: <i>The Community Garden</i> | 16 - 17 |

The gardens can be visited in any order between 10 am and 4 pm.